

Rotary
Emergency
Aircrew
Connector
Harness

REACH

The Martin-Baker Rotary Emergency Aircrew Connector Harness (REACH) is designed for use with an ejection seat equipped with a Torso Harness restraint system. In order to optimise post-ejection aircrew survivability, REACH is ergonomically designed to provide simple operation in all environments, even with thick winter gloves.

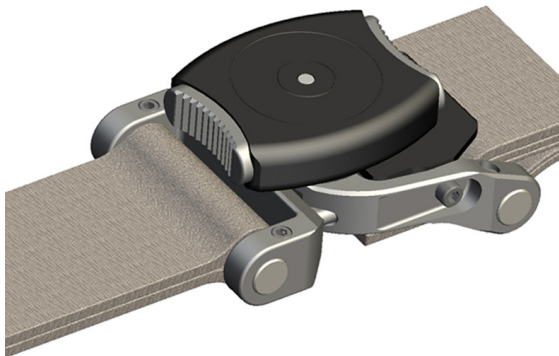
Ergonomically designed:

- ▼ Multi-way rotation
- ▼ Twin action release - squeeze and rotate action
- ▼ Protrusion of indicator pin demonstrates 'disconnected' state
- ▼ Optimised for operation with maximum bulk winter gloves



Replacement:

- ▼ Seamless integration with UWARS
- ▼ Form and function for Frost and Koch fittings
- ▼ Compatible with PCU-15, PCU-16, PCU-56 and PCU-78 torso harness systems

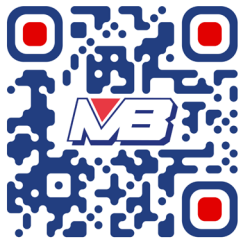


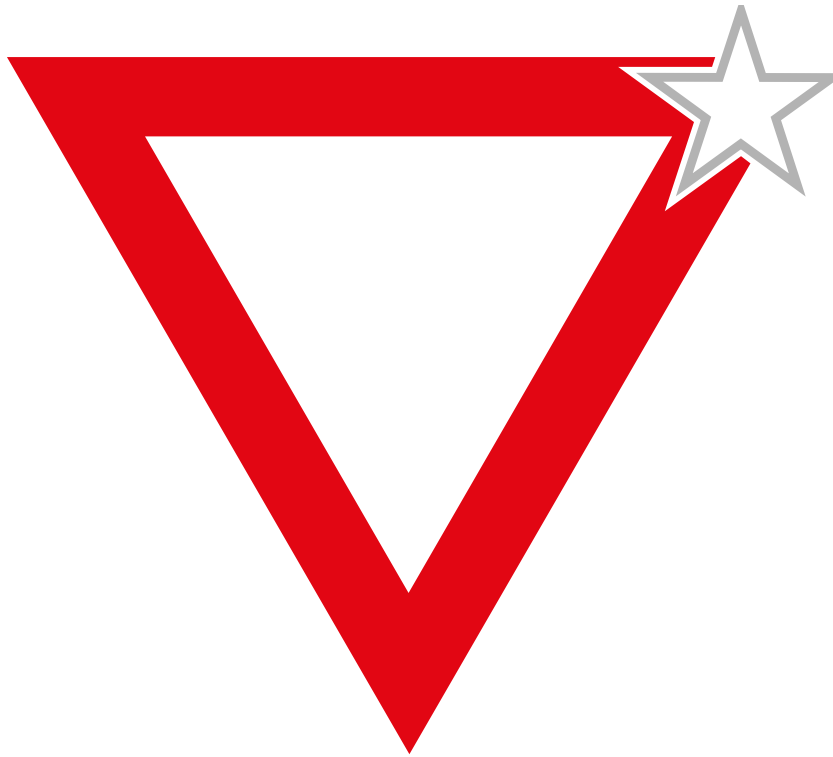
The physical and visual presence of the red indicator pin allows operators to establish whether the rotary release is in locked or unlocked release condition regardless of whether they can see it. Protrusion of the pin indicates a 'disconnected' state.



Qualified & In-Service:

- ▼ Ejection qualified to 600kts
- ▼ Environmental qualification to MIL-STD-810E
- ▼ Structurally tested to MIL-Q-87152A
- ▼ In-service on aircraft equipped with Martin-Baker Mk16 ejection seats





AIRCREW SAFETY EQUIPMENT